



Hounsome Fields Primary School - Consultation

Welcome

Engage Enrich Excel Academies (EEEE) Trust is inviting your views on the proposed Hounsome Fields Primary School, with the backing of the Hampshire County Council, with the aim of opening in September 2025. The primary purpose of this s10 consultation is to inform the decision about whether to enter into a funding agreement with the Secretary of State for Education to establish the school.

The new Hounsome Fields Primary school is proposed to open as a one form entry school (expanding to two form entry) along with a Resource Provision for pupils who will have an Education Health Care Plan (EHCP) whose primary area of need is likely to fall within the category of Social, Emotional and Mental Health (SEMH).

EEEE values your opinions and thoughts and is committed to ensuring that the community remains central to the new school. We are offering opportunities to engage with the Trust through:

- **Completing an on-line Survey**, [Link to Survey](#)
- **Consultation event on Monday 23 September 2024, 17.30 – 19.30 pm**, Beggarwood Community Centre, Broadmere Road, Beggarwood, Basingstoke Hants RG22 4AG
- **By Email** to info@housomefields.school
- **By post** to: The CEO, Engage Enrich Excel Academies, 181 Frimley Road, South Camberley Primary & Nursery School Junior Site, Camberley, Surrey, GU15 2QB

You are warmly welcome to engage and give your views in whatever manner best suits you.

To find out more about the school, including full details of this consultation, please visit www.housomefields.school. Paper copies are available by contacting the EEEA office on 01276 423040.

We have contacted many individual, institutions and community groups around the vicinity of the school in an effort to ensure that that this consultation is as comprehensive as possible. We would greatly appreciate your assistance in furthering this aim by sharing this consultation with anyone you feel may be interested. **The consultation will run from 8th July to 30th September 2024 with a report prepared shortly thereafter.**

Regards

The Hounsome Fields Primary team



CEO Welcome



Education is a process which enables children to understand the world around them and the best learning takes place in a safe and happy environment. Hounsme Fields Primary School will be a school which inspires children to dream and realise their potential.

As a key part of the Wellesley development Hounsme Fields Primary School will play an important part of helping to develop the community. The school will open with one reception class in September 2025 and the school will grow each year alongside the development.

The Hounsme Fields Primary School will be an extension of the local community, and, with your co-operation as parents, your child has a unique contribution to make and we shall all find much to discover, share and enjoy together.

The families that will be the first to experience the school will benefit from helping to shape and mould the school community. We believe learning is a process of co-operative teamwork and families that will attend from September will benefit from a world-class learning environment.

Our trust believes every school should be a great school and the Hounsme Fields Primary School will be a place of excellence and enjoyment. Children will learn about the rich local history of Basingstoke as well as the diversity and wonders of our country and the world.

We understand how important it is that families make the right decision for their child. Being part of Hounsme Fields Primary School family will be a rewarding, inspiring and wonderful experience.

The school building is due for completion in July 2025 and in July we will be inviting the first children and families to come and see one of the best school environments built in the UK this year.

We look forward to working with our families, challenging the children and shaping a curriculum that enables all pupils to achieve their potential.

Kind regards

David Harris

"One child, one teacher, one book, one pen can change the world."

Malala Yousafzai



Mission Statement:

- Hounsome Fields Primary School seeks to create a safe, happy and healthy learning environment.
- We believe that every member of our community is a life-long learner. Together we can foster the hopes and dreams of our learning community. We believe that all learners have a right to be challenged and motivated to enable them to achieve their potential academically, personally, socially and emotionally.
- As an inclusive learning community, we believe that every child does matter and it is our duty to prepare our children for the challenges of the 21st Century. Providing high quality learning experiences is the foundation of our school.
- We believe in excellence for all and strive to deliver a wide range of experiences which enable the children to grow in confidence and strive to become successful members of our community.
- We believe that Teaching and Learning is a process of co-operative teamwork and welcome and encourage the involvement of parents and others in the community.

School Values:

HEART to represents the five core school values:

- **Honesty**
- **Empathy**
- **Achievement**
- **Respect**
- **Teamwork**

Here's a brief explanation for each value:

- **Honesty:** Promoting truthfulness and integrity in all interactions.
- **Empathy:** Fostering understanding and compassion for others.
- **Achievement:** Encouraging and celebrating academic and personal successes.
- **Respect:** Cultivating a culture of mutual respect and appreciation for everyone.
- **Teamwork:** Valuing collaboration and cooperation to achieve common goals.

These values collectively create a nurturing and positive school environment where everyone can thrive with HEART.



About Hounsme Fields Primary School.

The school is part of an exciting urban development in Basingstoke. The school has been designed by Hampshire County Council and in partnership with the Engage Enrich Excel Academies Hounsme Fields Primary School promises to be one of the best school buildings in the country.

The building itself revolves around a court yard area and there will be two floors. The designers have created a building that appreciates the natural surroundings and allows light to flow through the building, to enhance the children's learning experience.

The school grounds are extensive and children will benefit from a large sports field, a hard surface play area and a football pitch. In addition to these great resources, children in the early years' environment will be able to play in a beautifully constructed playground aimed at developing their academic, social and spiritual skills. They will be able to experiment and explore the world around them in a safe, secure and stunning setting.





Facilities:

- Extensive playing fields
- Purpose built early years play area
- Courtyard area
- Outdoor play area - hard court
- 14 classrooms
- Specialist teaching areas for cooking, science etc.
- Learning Resource Centre
- SEMH Resource Provision





Site Strategy plan.

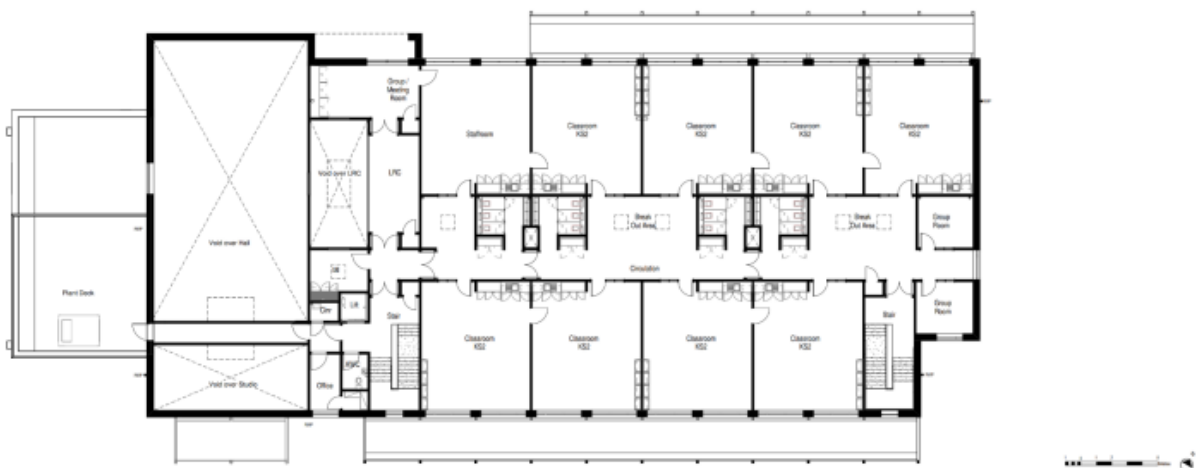




Proposed Ground Floor map



Proposed First Floor Map





The SEMH Resource Provision (RP)

Key aims for the SEMH Resource Provision

- For children to feel happy and safe in a positive environment
- To help pupils make good progress with their learning
- To build self-esteem and confidence. To have a sense of belonging
- To enable children to build trusting relationships and play with their peers
- To support children to stay in mainstream education
- To work with all stakeholders to understand behaviour as a communication of an emotional need so we can develop consistent strategies that benefit the individual child
- To positively collaborate to ensure the RP is a beacon of success

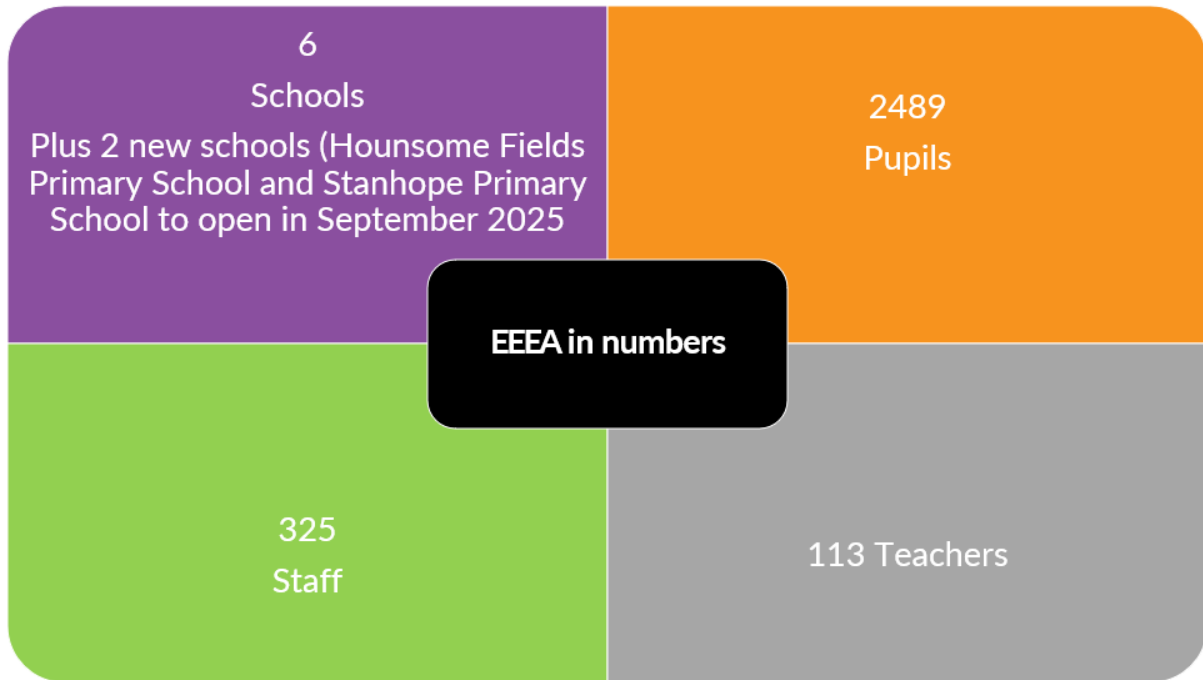
The SEMH Resource Provision Curriculum

- Children to have full access to the national curriculum at the appropriate level based on individual need.
- Modifications may include:
- Opportunities to take part in small group, individual or 1 to 1 activities
- Individual support for mainstream lessons
- Acute awareness of sensory difficulties in relation to their needs
- Work and reward system to provide motivation
- Adapted tasks to help a child feel successful, develop their concentration and be the best they can be



About EEEA

EEEA in numbers



EEEA Track record

Quotes from OFSTED Inspection from other trust schools

“Leaders strive to ensure that all pupils, including those with special educational needs and/or disabilities, **access a well-planned curriculum**. Teachers adapt learning to excite and engage pupils, helping them to make progress and remember more of the curriculum.”

“The school provides high quality pastoral support. From children’s first days at school, **staff form nurturing relationships with them and their families, built on clear communication**. Governors and trustees share school leaders’ high expectations for an inclusive learning community.”

One parent said, ‘**This school has really helped pull the community together.**’

The Cambridge Primary School, September 2022



“Leaders have a **sound knowledge of the differing needs of children with special educational needs and/or disabilities (SEND)** as they move through the school. Leaders are skilled in identifying individual needs and they support teachers to adapt their teaching appropriately.

This enables pupils with SEND to learn effectively alongside their peers. Staff feel well supported by leaders. All this has helped to create a positive environment where pupils are ready and eager to learn.”

One parent said, ‘They go above and beyond expectations.’

South Camberley School, May 2022

“Pastoral care is a strength of the school. Many parents appreciate the focus on pupils’ well-being. **Staff with relevant expertise provide therapeutic care for pupils in multi-sensory areas, such as the ‘tranquillity cove’ and ‘zen den’.** Leaders show dedication to finding the best for every pupil.”

“Expert staff provide high-quality support for pupils to help them feel good about themselves and be ready to learn. One parent said, ‘The school is a rock, they are always there for us.’ Another shared that staff ‘go above and beyond to help’.”

Westfield Primary School, September 2022



School Admission Policy 2025

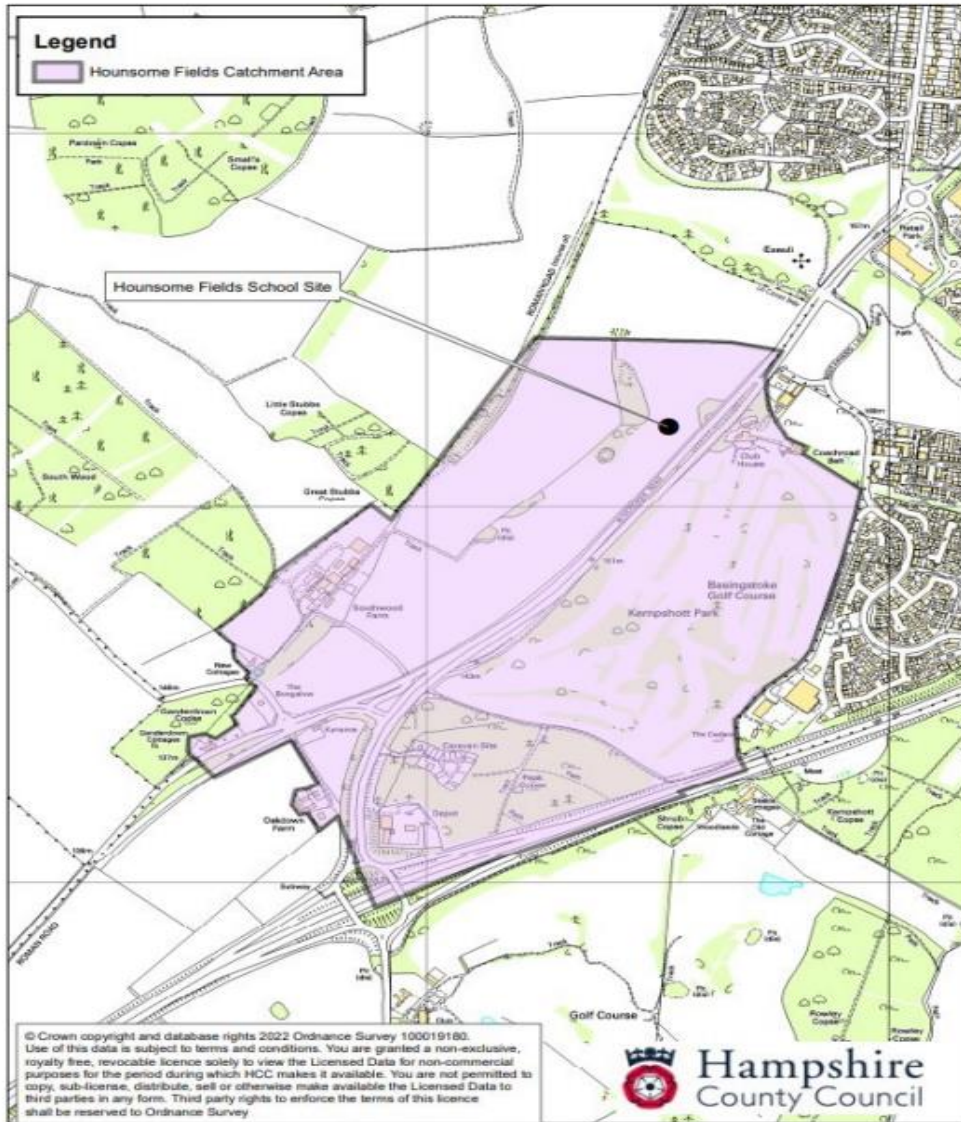
The full School Admission's Policy is [available here](#).

It has been developed to meet the needs of local children with priority being given to local children.

In particular, the catchment area for the school has been designed to meet this aim and to minimise any impact on other local schools.



engage enrich excel academies



Parents/Carers wishing to apply for the school for September 2025 entry, will be able apply through Hampshire County Council ([www. Hants.gov.uk](http://www.Hants.gov.uk)) from the 1st November 2024.



Other Policies

Other sample policies can be found on the www.eeea.co.uk. EEEA encourages each school to develop policies that best fit their needs. Hounsme Fields Primary School will be developing these sample policies so that they are adapted to meet the unique vision and ethos of the school.

Road map for opening:

- Work started on site on 1st June 2024
- The school building will be completed by May 2025
- We welcome 30 reception children in September 2025
- Applications for admissions open September 2024
- The headteacher will be appointed in autumn 2024
- We will advertise for other staffing towards the end of 2024
- Monthly meetings with the developers, DFE and Hampshire